

LIFE SAFETY & SECURITY DOOR HARDWARE

ADVANTEX® 60/70/80 SERIES CONCEALED VERTICAL ROD DEVICES

- Super heavy duty for use on high traffic, high abuse doors
- All exposed surfaces are architectural finishes over stainless steel
- Angled end cap deflects damage away from device
- Patented mounting plate and strike locator system
- Quick & easy change on a variety of outside trims and functions
- UL certified at over 1,000,000 cycles
- Field reversible
- 1/8 turn hex key or cylinder dogging



60 SERIES (Narrow Stile) Top and Bottom Rod
61 SERIES (Narrow Stile) Top Rod Only
 for **Aluminum Doors**

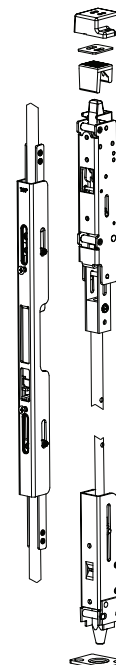
62 SERIES (Narrow Stile) Top and Bottom Rod
63 SERIES (Narrow Stile) Top Rod Only
 for **Hollow Metal Doors**



70 SERIES Top and Bottom Rod
71 SERIES Top Rod Only
 for **Wood Doors**

80 SERIES Top and Bottom Rod
81 SERIES Top Rod Only
 for **Hollow Metal Doors**

82 SERIES Top and Bottom Rod
83 SERIES Top Rod Only
 for **Aluminum Doors**



ADVANTEX SERIES TRIM



C (10, 20, 21 Series)
CM (30 Series)
CV (70/80 Series)
 Function: **01, 02, 03**



W (10, 20, 21 Series)
WM (30 Series)
 Function: **01, 03**



Z (10, 20, 21 Series)
 Function: **02, 03**



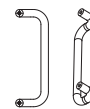
WS (10/20/21/40/50/51 Series)
WSV (70/80 Series)
 Function: **03**



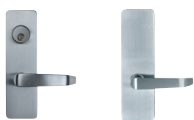
CN (40/50/51 Series)
CNV (62/63 Series)
 Function: **01, 02, 03**



R (60 Series)
 Function: **03**



WP (60 Series)
 Function: **02**



D & EU (S lever shown) (10, 20, 21 Series)
DM & EU (30 Series)
DV & EUV (70/80 Series)
 Function: **08, 09** Function: **02, 14**
 Function: **10** (10 & 30 Series Only)



DN (40/50/51 Series)
DNV (60 Series)
 (S lever shown)
 Function: **08, 09** Function: **02, 14**



EU2W - wide escutcheon,
 fits medium stile doors
 (40/50/51 Series)
 (S lever shown)
 Function: **08, 09**

Vandal resistant clutching levers are standard on all wide stile lever trims

Factory installed rim and mortise cylinders shown (specify RC65 or MC65)

FUNCTIONS

ANSI Function:

- 01 - Exit Only - No Trim
- 02 - Dummy Trim - No Cylinder
- 03 - Entrance by trim when latchbolt is retracted by key. Key removable only when locked (Rim cylinder required)
- 08 - Entrance by lever. Key locks or unlocks lever (Mortise cylinder required)
- 09 - Lever trim active by key; locked when key removed (Mortise cylinder required)
- 10 - Entrance by lever. Inside or outside key locks or unlocks lever
- 14 - Entrance by lever. Lever operable at all times (No cylinder)
- EU - Electric Unlock Trim - Lever trim active by key; locked when key removed (Mortise cylinder required)