

TECHNICAL DATA
FROM
Anemostat[®]
DOOR PRODUCTS
A MESTEK COMPANY

P.O. BOX 4938 • 1220 WATSONCENTER ROAD
CARSON, CA 90745-4206
(310) 835-7500 • FAX (310) 835-0448

e-mail: door@anemostat.com • website: www.anemostat.com

FLDL-UL

FUSIBLE LINK
LOUVER

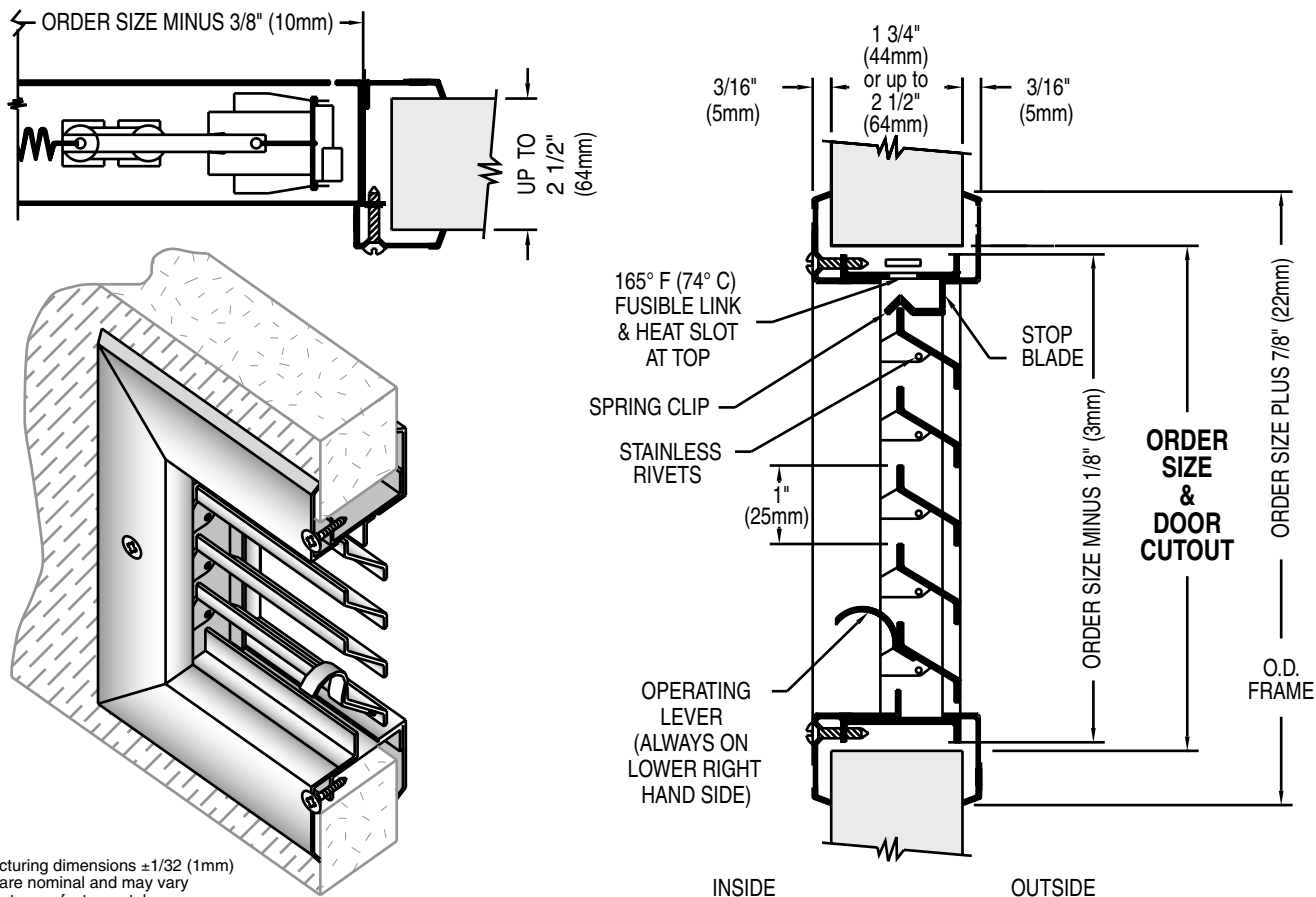


UNDERWRITERS'
LABORATORIES
FILE #R77776

FIRE
RATINGS

B.S.-476.22
British Standard

DETAIL DRAWING



Anemostat manufacturing dimensions $\pm 1/32$ (1mm)
Actual dimensions are nominal and may vary
based on component manufacturers tolerances.

STANDARD PRODUCT FEATURES

- MATERIAL:** 18 GA. (1.2mm) Cold Rolled Steel Frame and Louver Blades, 16 GA. (1.5mm) inner support members.
- FINISH:** Grey Primer, Beige or Bronze Baked Enamel.
- INSTALLATION:** Self attaching using #8 x 1" (25mm) phillips head screws that fasten the auxiliary frame to the louver core, thru the cut out in the door. The corridor side of the frame is free of fasteners for added security.
- DOOR THICKNESS:** 1 3/4" (44mm) Door is Standard. Also available up to 2 1/2" (64mm) Door (to maintain fire rating).
- CLOSING ASSEMBLY:** Stainless steel operating springs assure proper action with the closing mechanism.
- AESTHETICS:** Tight mitered corners and countersunk mounting holes make for a clean appearance.
- USES:** In fire rated door applications.
- FREE AIR FLOW:** 40% Free Area.
- NOTE:** For Exterior use, High Humidity or Salt Air application, product must be Galvanized or Stainless Steel.

OPTIONAL FEATURES

- MATERIAL:** #304 or #316 Stainless Steel, #4 Finish (Satin), Galvanized (Coil or Zinc Plated). Not available in Hot Dipped or Aluminum.
- FINISH:** Custom Baked Enamel Colors (as per sample chip supplied by customer).
- FASTENERS:** Special security screw fasteners, See page 14, this section.
- SPECIALS:** Fractional sizes not available.
- SCREENS:** 18-14 mesh insert screens, framed or attached. (Galvanized, Aluminum, Charcoal Aluminum, Stainless Steel). For detail drawings see pages 12 and 13, this section.

FIRE RATINGS (with U.L. classification markings) Positive Pressure

- 20/45/60/90 MINUTE:** Approved listing - max width 24" (610mm), max height 24" (610mm) min width 10" (254mm), min height 6" (152mm)

BS 476.22 Steel Doors - 2 hours. Tested to 610mm x 610mm
British Standard

- IMPORTANT:** Interpretation of building and fire codes may vary. Consult with the local authority having jurisdiction in your area, to determine appropriate standards.

Job Name & Location	Submitted by

For Most Current Info, Consult Factory or check our website, www.anemostat.com