

WoodPro Installation Instructions

- Install LoPro vision frame and glass in door.
- If WoodPro is over 36" in height, install veneers only when door is in a horizontal (flat) position.
- If veneers are for a rectangular kit, install the two short pieces first.
- Due to manufacturing tolerances inherent in the process, there may be a slight gap in the mitered corners. If this is the case, use matching wood putty or putty stick to fill. Sand lightly to blend and stain and seal as normal.



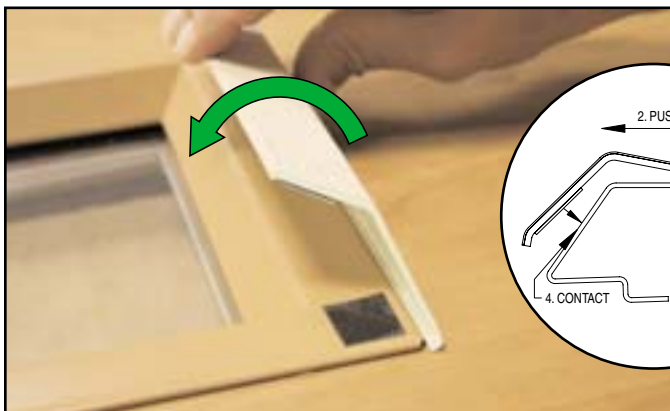
- Wash hands prior to installing veneer strips.
- It is recommended that clean cotton gloves (not included) be used when handling and installing veneer strips.
- Avoid using oils, greases or cleaners on this product.



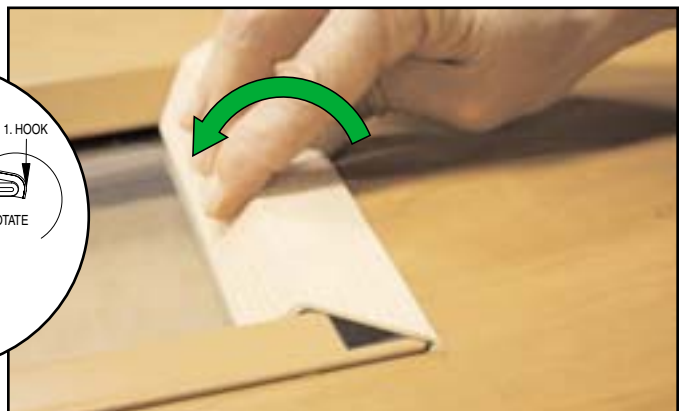
- Apply adhesive squares to corners of LoPro and peel protective backer.



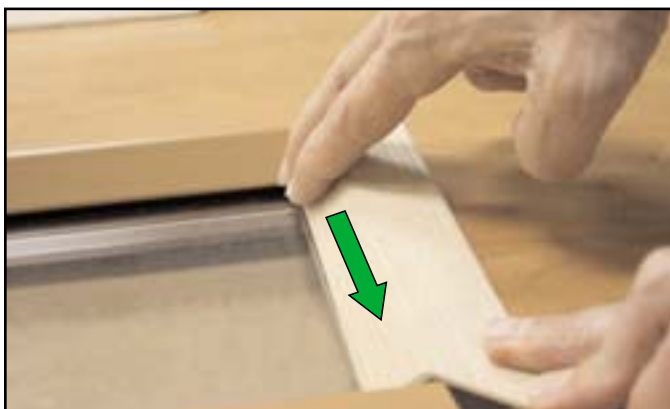
- Pull protective strip from adhesive tape on inside of veneer.



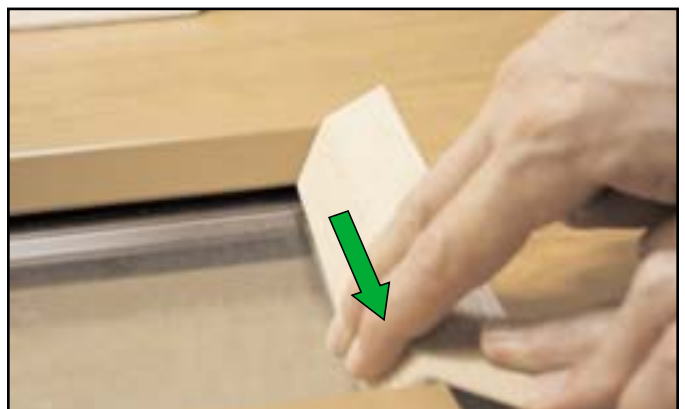
- Place long edge of veneer against outside portion of vision frame using miters as alignment guide.



- Rotate veneer towards glass.



- Use pressure from fingers to adhere tape to frame.



- Slide fingers with slight pressure along bevel to insure proper contact.