

WoodPro™

Wood Veneer Metal Vision Frame

Patent Pending



Red Oak



Maple



Cherry



Mahogany



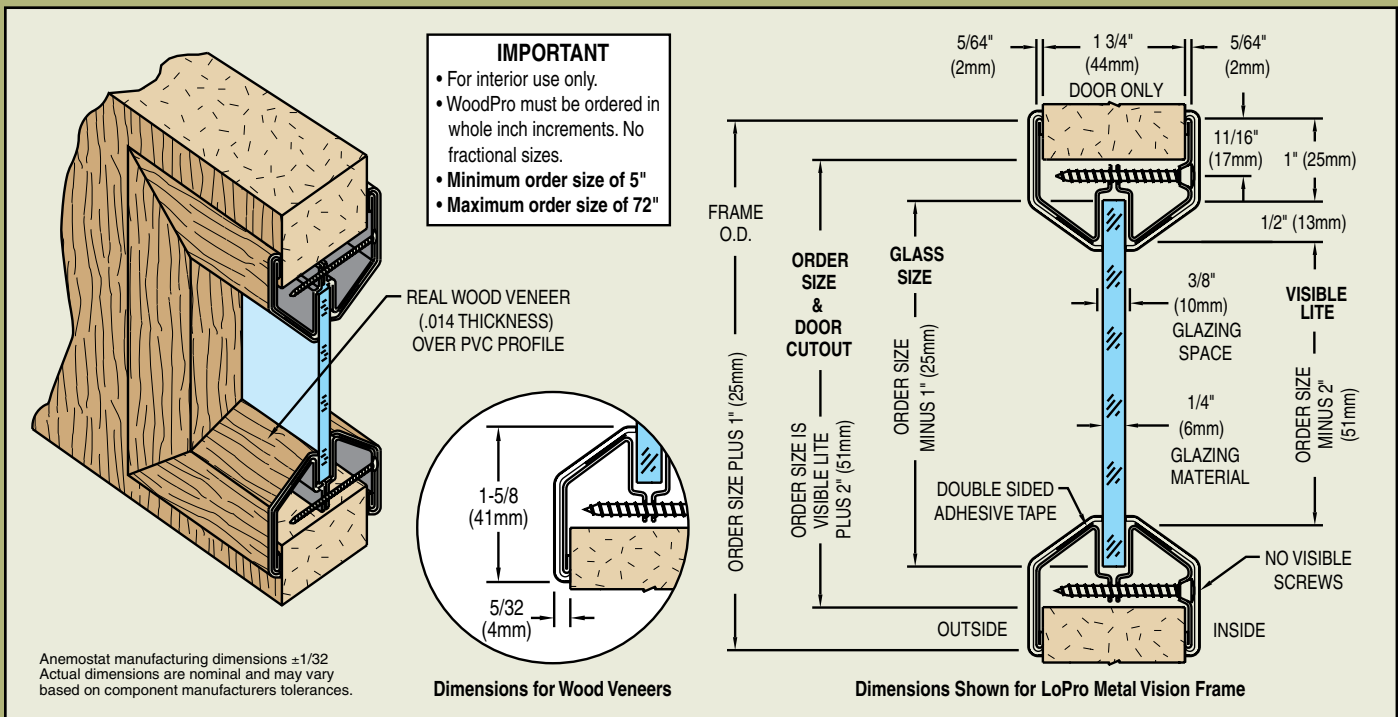
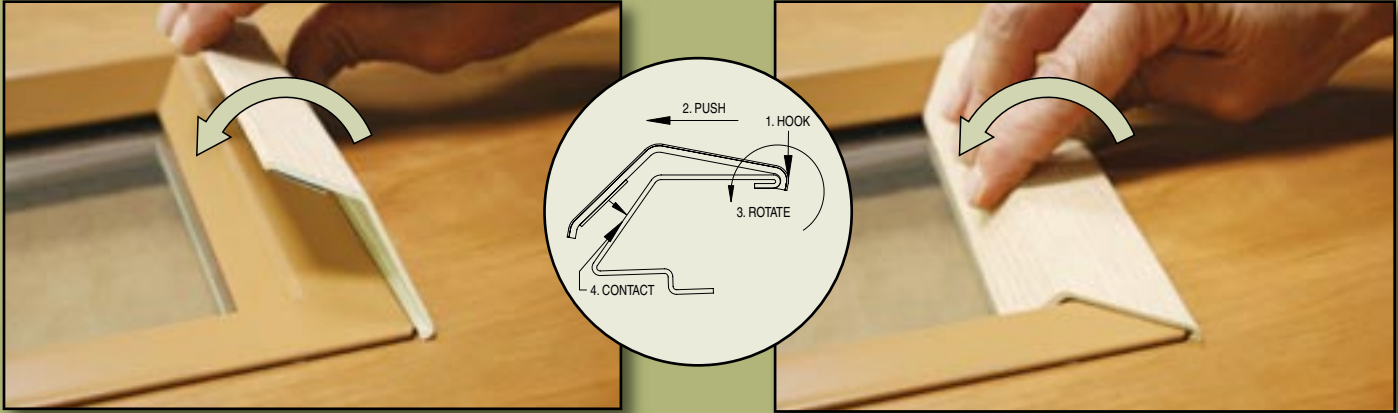
Anemostat®
www.anemostat.com

1220 Watson Center Road • Carson, CA 90745-4206
310-835-7500 • Fax 310-835-0448 • E-mail door@anemostat.com

REAL WOOD VENEER

Over LoPro Metal Vision Frame

WoodPro™



Anemostat manufacturing dimensions ±1/32
Actual dimensions are nominal and may vary
based on component manufacturers tolerances.

Dimensions for Wood Veneers

Dimensions Shown for LoPro Metal Vision Frame

Material and Finish

- Unfinished Wood Veneer over PVC fastens to Metal LoPro Vision Frame with Double Sided Adhesive Tape.
- Red Oak
- Mahogany
- Maple
- Cherry

Size Range

- 5" to 36" w x 5" to 72" h
- For 1-3/4" Door and 3/16" or 1/4" Glazing
- Not Available in Fractional Sizes

Fire Rated

- UL Tested and Listed
- 20 minute
- 45 minute
- 60 minute
- 90 minute

Aesthetics

- No Visible Screws
- Flush to the Door Look
- Interior Use Only



Anemostat®
www.anemostat.com

1220 Watson Center Road • Carson, CA 90745
310-835-7500 • Fax: 310-835-0448

E-mail: door@anemostat.com • www.anemostat.com